



# HARLEQUIN® multiRIP™

Migration Utility for Windows

Version 7.0r1

March 2014

# Contents

1	Overview .....	1
2	Versions of the RIP .....	4
3	Requirements.....	4
4	Limitations.....	5
5	Migrate procedure .....	7
	Appendix A—Example log file .....	12

# Transferring settings to a new installation

Transferring settings from an installation that has been used for some time can be a difficult operation to perform quickly and accurately. The migration utility makes this process simpler.

This document describes the migration to the Harlequin MultiRIP v10.0 (HMR) using Migrate v7.0r1.

## I Overview

The migration utility is a self-contained, Java™-based utility that transfers the majority of settings from an installed and used Harlequin RIP™ or Harlequin MultiRIP™ to a freshly installed MultiRIP of a newer version. The Java component provides an easy to use interface that is consistent across all platforms.

In general terms, the transferred settings are those related to page setups and output plugins, while the un-transferred settings are those that may depend on the version of the RIP, such as custom page features. See “[Limitations](#)” on page 5 for more details, including some limitations in this release.

The utility generally transfers page setups, including:

- RIP memory settings.
- Separations, screening, and color setups.
- Plugin parameters (as set in the Device Configuration dialog box).
- Use of page features (but not the page features themselves).
- Resolution and units.
- Effects (Rotate, Negative, Trim page, and Mirrorprint).
- Scaling.
- JobID—if the JobID in the old RIP is higher than the JobID in the new RIP, increase the JobID in the new RIP to match the old RIP.
- Cassette selection (and all cassettes whether or not used by a page setup).
- Calibration (calibration, tone curves, and intended/actual press).
- Passwords

A RIP password in a new RIP, that is a password in the **ConfigureRip** file in the **/Extras** dictionaries, will not be overwritten during a migration from an older RIP. This is because RIP passwords will be migrated from an earlier RIP, only when the equivalent password in the target (new) RIP is set to 0. This also applies to RIP passwords that were not present in the older RIP. So, if any RIP passwords are enabled in the new RIP before the migration, they will not be overwritten during the migration.

For non-RIP passwords, you should enable the option in the new RIP after the migration. That is, passwords in the **/ProtectedDevices**, **/PluginExtras** and **/ProtectedScreen** arrays in the **ConfigureRIP** file will not be migrated.

The migration utility also transfers:

- Harlequin plugins, and devices based on multiple-device plugins, if not present in the new RIP.  
**Note:** Plugins are not migrated when migrating from a 32-bit to a 64-bit RIP.
- Some OEM plugins.  
**Note:** If migrating a third-party plugin, ensure that the plugin is installed into the destination RIP before migration. To complete the migration process create a page setup for the plugin in the destination RIP. Some third-party plugins install DLLs which will not be migrated.  
**Note:** Migrate copies over to the new RIP any folder under `/Devices` of the source RIP if it contains a plugin that is not already in the target RIP. It will not override any plugin that is already in the target folder (that is, it will skip the copy), but upgrades the settings to the newer version if necessary, and merges them into the plugin in the new RIP. Migrate will not delete any plugin from the new RIP.
- Passwords that have enabled plugins and other RIP extras.
- Simple imposition settings.

## 1.1 Folder structure

The utility is supplied with an appropriate runtime version of Java for Windows. The runtime version is the Java Runtime Environment (JRE). The JRE has its own documentation, including a license concerning its use: this documentation is in the `jre` folder of the utility.

## 1.2 Document structure

The remainder of this document covers:

- Supported versions of the RIP—see [“Versions of the RIP” on page 4](#).
- Requirements—see [“Requirements” on page 4](#).
- Limitations—see [“Limitations” on page 5](#).
- Migrate procedure—see [“Migrate procedure” on page 6](#).
- Example log file—see [“Appendix A—Example log file” on page 10](#).

## 2 Versions of the RIP

The migration utility can transfer settings between various versions of the RIP. The oldest version RIP supported by Migrate is version 4.1r4.

There is no support for migration to, or from, beta versions of the RIP, though it may be possible for some versions. There is also no support for migration to version 5.0r0 (and earlier beta versions), and this particular migration is known not to work.

This document describes migration to HMR v10.0 from v8.1, v9.0rx, v2.0rx, v3.0rx.

## 3 Requirements

The old and new installations of the RIP and the migration utility must be accessible on the same computer.

The computer must be capable of running Java. In general, this imposes a lower requirement than running the RIP, but may require a later operating system than that required by version 4.5 or earlier of the RIP. The Java distributions do not give a full specification, but these are guidelines:

- All Windows platforms must have 32 MB of free RAM, 21 MB of free disk space, and otherwise be able to run the newer version of the RIP.

The utility creates a small number of temporary files, in the `sw` folder of the new RIP installation. These files are all in the temporary `newsw` folder and should not occupy more than 5 MB in total, unless large profiles have been imported into the original RIP. The utility copies some information from these temporary files into the configuration files of the new installation and removes the temporary files at the end of a migration, leaving only a log file of what was done.

You can run the utility by double-clicking `Migrate.exe` which is located (by default):

```
C:\Users\<<name>\HMR_10_0_Generic\migrate\SW_Migrate
```

## 4 Limitations

The aim of the utility is to transfer those settings for which a new setting can be deduced safely in the new RIP. We are working to reduce the number of limitations, but some are based on Java implementations and are outside our direct control.

### 4.1 Limitations in the utility

The migration utility does not transfer:

- 32-bit plugins to 64-bit RIPs (a warning dialog is displayed during the migration).
- Additional installed fonts. (The basic 32 fonts do transfer.)
- PDFR password.
- Memory settings return to default
- Page buffering returns to Multiple Parallel
- The Workspace and Page buffer folder locations, as configured in the RIP Extras dialog, are not transferred.
- Media Manager settings.
- Custom screens installed in the RIP.
- Settings between RIPs with different localizations.
- Emulation profiles

If you have imported emulation profiles into a pre TIFF/IT-P1 RIP and wish to migrate to a TIFF/IT-P1 or later RIP, you must re-import the profiles into the destination RIP. The Migrate utility issues a warning to this effect. Note however, that imported page setups continue to reference emulation profiles and will not need to be updated once the relevant emulation profiles have been imported.

The migration utility transfers some features partially:

- **Configure RIP**  
Only the Print buffer and Network buffer settings from Configure RIP dialog of the old RIP are migrated to the new RIP.
- **Input channels**

A spool folder is only migrated if it is located within the old `sw` folder. If this is the case, it is migrated to the same location in the new `sw` folder.

If a channel name in the old version of the RIP matches a channel name that already exists in the new version of the RIP, the migrated channel name is postfixed by `_M00`.

- **Page Features**  
If any page setups use special page features (ones not supplied with the new RIP by your supplier) you will need to copy these page features into the new RIP. Some page features may need rewriting to suit a newer version of the RIP but, for example, you may wish to do this anyway in order to use LanguageLevel 3 or other features of a newer version RIP.
- **File-based output plugins**  
Page setups using the TIFF output plugin or other file-based output plugins that use folders named in their configuration dialog boxes, will still use the location defined in the old RIP. You may wish to change the locations if the old RIP defined a location in its own folder. You can probably leave the location unchanged if the old location was outside the old RIP's folder hierarchy.
- **Page setups using the Fuji Pictography plugin**  
The utility cannot migrate page setups using the Fuji Pictography plugin from version 4.x to version 5.x where there is a corresponding plugin in the newer RIP installation. There is a warning if this situation occurs.

## 4.2 Version-based limitations

The migration utility transfers some features differently between various versions of the RIP.

Any version to version 8.1r0 (or later):

- Emulation BVD-FOGRA profiles which have been replaced in v8.1 will not be copied from older versions, unless a color setup is using them.

Version 8.2rx to version 8.3:

Migration from v8.2rx to v8.3 is not allowed when using Migrate v4.2r0.

Any version to version 9.0r0 (or later):

- The BVD\_FOGRA press profiles have been replaced by new FOGRA and IFRA press profiles. If you use these files in a Press Calibration setup in the Calibration Edit dialog, you must edit the setup after migration, and select one of the replacement profiles available in the RIP.

## 4.3 Platform-based limitations

Most platform-based limitations are due to variations in the implementation of Java for the various platforms. We anticipate that these implementations will improve.

## 5 Migrate procedure

**Note:** Non-Harlequin plugins are treated in much the same way as Harlequin plugins. The only difference is that Migrate knows which version of Harlequin plugin it expects for a particular version of RIP, and patches the difference between the old and new.

**Note:** Migrate copies over to the new RIP any folder under `/Devices` of the source RIP if it contains a plugin that is not already in the target RIP. It will not override any plugin that is already in the target folder (that is, it will skip the copy), but upgrades the settings to the newer version if necessary, and merges them into the plugin in the new RIP. Migrate will not delete any plugin from the new RIP.

Make sure you have installed the new version of the RIP so that it is usable on the same computer as the old installation of the RIP.

If migrating an OEM plugin, please ensure that the plugin is installed into the destination RIP before migration. Then to complete the migration process create a page setup for the plugin in the destination RIP.

**Note:** Some third-party plugins install DLLs which will not be migrated.

Do not use the new RIP before performing the migration except, perhaps, to check that it operates and that the user interface appears in the correct language. If you do more, the migrated page setups may conflict with, and override, settings that you think you have made in the new RIP. If you have made tests and created page setups and other settings, we suggest that you delete that installation of the RIP and migrate into a fresh installation.

**Note:** When migrating from HMR 10.x with HLS to HMR 10.x with LDK if you don't re-install the RIP, you must change the `SW\secprefs` file to indicate that the RIP should use LDK instead of HLS after the migration. The `SW\secprefs` file is created during the installation, and it informs the RIP which security option to use when both LDK and HLS are installed on a system.

To use LDK security the `SW\secprefs` file contents should be:

```
method
ldk
```

A quick overview of the procedure is:

- Use the utility—see [“Using the migration tool” on page 7](#).
- Copy or re-create any items and settings not transferred by the utility—see [“Copy or re-create any items not transferred by the utility” on page 9](#).
- Check the RIP—see [“Check the new RIP” on page 10](#) and read [“Notes on transferred page setups” on page 10](#).

## 5.1 Using the migration tool

1. Before starting the migration procedure, quit all loaded versions of the Harlequin RIP.

**Note:** Before using the migration tool, you *must* have loaded each of the two RIP versions at least once. The migration tool will not find RIPs that have not previously been loaded. However, it is *not* necessary to have run any jobs through the RIP prior to using the migration utility.

2. Start the Migrate utility by running `Migrate.exe`. The Harlequin RIP Migration Utility dialog box opens, as shown in [Figure 1](#). The controls in the dialog allow you to select the old and new RIP versions that you want to transfer settings and password files between.
3. Choose the old RIP (the one you are transferring *from*). Click the button labelled **Select “From” RIP** and, using the dialog box that opens, navigate to the installation folder containing the RIP, then click **Open**. The program will scan the folder and its subfolders, searching for *all* instances of the Harlequin RIP. Any RIPs found are displayed in the **Version** menu.

- Depending on the folder selected, or how you have installed the RIPs, there may be more than one RIP to choose from in the **Version** menu. From the menu, choose the appropriate RIP.

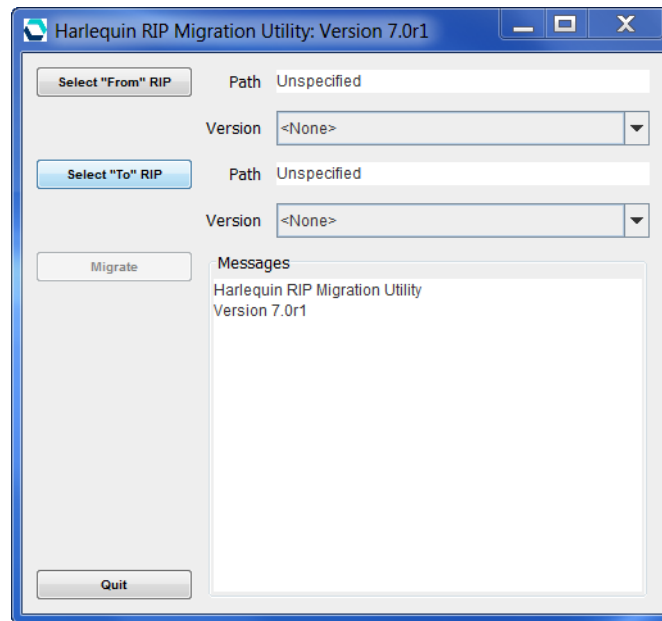


Figure 1 Harlequin RIP Migration Utility dialog box

- Choose the new RIP (the one you are transferring *to*). Click the button labelled **Select “To” RIP** and, in the dialog box that opens, choose the folder containing the new RIP. Again, depending on the folder selected there may be more than one RIP in the **Version** menu.

**Note:** The “To” RIP cannot be the same as the “From” RIP, otherwise, Migrate will issue an error message and abort.

- Click the **Migrate** button to start the migration process. The utility scans the old RIP and displays its progress in the **Messages** text panel. (While doing this, the utility is building a list of changes in files held in a temporary folder in the new RIP.)

A typical period is up to five seconds per simple page setup when scanning and under a second per file when merging the temporary files. During these processes there should be no long pauses (over 60 seconds) without text appearing in the **Messages** text panel.

If you are performing a migration from a 32 to 64-bit RIP the following message appears informing you that plugins will not be migrated:

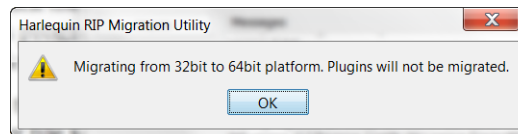


Figure 2 32-bit to 64-bit warning

- Click **OK** to continue.

If the utility fails to find information about a plugin, it is unable to transfer any page setups using that plugin. The utility reports each problem of this kind with a dialog box displaying the message:

There is no information in the Tones Table for the plugin (*pluginame*)

Click **OK** to dismiss the dialog box. If any page setups use this plugin you will see this message:

The page setup "*setup\_name*" could not be migrated.  
Do you wish to continue?

Click **OK** if you wish to continue with the migration, without the named page setup. Click **Cancel** if you wish to cancel the whole migration session.

If the utility reports this error for a plugin supported by your supplier, or you see any other problems, contact your supplier and give details.

8. If there are no problems, the utility displays a dialog box asking:

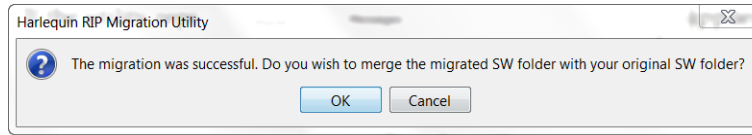


Figure 3 Merge SW folder prompt

Click **OK** to merge the temporary files and commit the changes. Again, the **Messages** text panel shows the progress of copying the files. Alternatively, click **Cancel** if you wish to leave your new RIP unchanged.

**Note:** Delete the `newSW` folder inside the `sw` folder if you click **Cancel** and quit the migration.

9. The utility displays a dialog prompting:

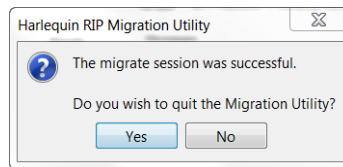


Figure 4 Migration successful prompt

If you answer **Yes**, the utility exits.

If you answer **No**, you can transfer settings to or from other RIPs in the same session. Change the "From" or "To" RIP using the appropriate button before clicking **Migrate** again.

## 5.2 Copy or re-create any items not transferred by the utility

Start the new RIP and if required, do the following.

- Make any other settings required in the Configure RIP dialog box, for example, memory settings and so on.
- Copy or install any custom screens.
- Install any custom fonts.
- If your old installation used any custom page features, copy them from the old RIP to the `SW/Page Features` folder of the new RIP.
- Create any color management setups needed.
- Enable the use of ColorPro in TIFF/IT-P1 or later RIPs.
- If migrating to TIFF/IT-P1 or later RIPs, you need to import any emulation profiles that were associated with color setups in the original RIP.
- Check the locations used by file-based output plugins.

### 5.3 Check the new RIP

First, check the listing of page setups in the Page Setup Manager dialog box. If the listing appears correct, edit each page setup that may use custom page features, color management, trapping, or a file-creating output device. If a page setup uses one of these options, check that you have supplied a suitable item of the correct name. [“Copy or re-create any items not transferred by the utility” on page 9](#) summarizes what you may need to do.

Next, print a simple job to each transferred page setup. Start by selecting **Disable output** in the Output Controller / Monitor before you print and Roam the page buffers. If the page buffers appear correct, enable output and send some page buffers to the output device. Look for errors in the Output Controller / Monitor and for messages in the RIP Monitor window.

If these tests show no errors the new RIP is ready for use.

### 5.4 Notes on transferred page setups

Successive versions of the RIP handle page setups and other collections of settings in different ways, especially in the way that they are named. The following notes may help you find settings that you think may not have been transferred.

- When you migrate from a Level 2 page setup to version 5.1 or later, the migrated page setup uses LanguageLevel 3 by default. If the Level 1 compatibility setting is chosen in a migrated page setup, this is transferred, but later use or editing of the page setup may detect an option setting, such as separating, where Level 2 is required. A dialog box announces where this happens.

## Appendix A—Example log file

The migration utility produces a log of the migration procedure, stored as `migrate.log` in the folder containing the `sw` folder of the installation to which you are transferring settings. This text file is a record of all the messages in the **Messages** panel, together with any questions and responses asked in dialog boxes.

This is an example of transferring settings from Harlequin Server RIP v9.0r2 (32-bit) to Harlequin MultiRIP v10.0r0 (64-bit):

```
Harlequin RIP Migration Utility
Version 7.0r1
```

```
Migrating from Harlequin RIP version "9.0 Revision 2 HARLQON Licence Server MT RIP"
to version "40.0 Revision 0 Final 64-bit Edition"
```

```
Starting migration at: Wed May 29 12:42:40 BST 2013
RIP version "9.0 Revision 2 HARLQON Licence Server MT RIP" migrates as "9.0 Revision
0".
RIP version "40.0 Revision 0 Final 64-bit Edition" migrates as "40.0 Revision 0".
```

```
Building file mapping table ... completed.
```

```
Migrating plugins and devices ...
* Plugin "epson3800" already exists.
* Plugin "okipcl" already exists.
- Migrating color profiles for plugin "okipcl" ...
** "Bvd-fogr" already exists.
* Plugin "pdfraster" already exists.
* Plugin "testnone" already exists.
* Plugin "tiff" already exists.
- Migrating color profiles for device "Preview" ...
** "Bvd-fogr" already exists.
- Migrating Device Manager ...
-- All devices of plugin "okipcl.i32" migrated.
-- All devices of plugin "tiff.i32" migrated.
Plugins and devices migration completed.
```

```
Migrating separations ...
- Migrating separations for device "Preview" ...
- Migrating separations for device "TIFF.X00" ...
Separations migration completed.
```

```
Migrating inksets ...
Inksets migration completed
```

```
Migrating trapsets ...
- All trapsets in
"C:\Users\kevinb\HarlequinRIP_9_0_2_Generic\SW\Config\Trapping\TrapPro" migrated.
Trapsets migration completed.
```

```
Migrating Imposition Manager ...
Imposition Manager migration completed.
```

Migrating color rendering intents ...  
Color rendering intents migration completed.

Migrating color setups ...  
- Migrating color setups for device "Preview" in space "DeviceCMYK" ...  
-- "(No Color Management)" migrated.  
- Migrating color setups for device "Preview" in space "DeviceGray" ...  
-- "(No Color Management)" migrated.  
- Migrating color setups for device "Preview" in space "DeviceRGB" ...  
-- "(No Color Management)" migrated.  
- Migrating color setups for device "Preview" in space "DeviceCMYK" ...  
- Migrating color setups for device "Preview" in space "DeviceGray" ...  
- Migrating color setups for device "Preview" in space "DeviceRGB" ...  
- Migrating color setups for device "TIFF" in space "DeviceCMYK" ...  
-- "(No Color Management)" migrated.  
Color setups migration completed.

Migrating color space resources ...  
Color space resources migration completed.

Migrating page setups ...  
- "Default Page Setup" migrated.  
- "Packaging1" migrated.  
- "Preview1" migrated.  
Page setups migration completed.

Migrating RIP configurations (memory settings and passwords) ... completed.

Migrating JobID ... completed.

Migrating calibration sets ... completed.

Migrating cassette manager ...  
Cassette manager migration completed.

Migrating units database ... completed.

Migrating UI Preference ... completed.

Migrating screen list ... completed.

Migrating Press color profiles ...  
\* "Commercial A" already exists.  
\* "Fogra 39L" already exists.  
\* "Fogra 43L" already exists.  
\* "GRACol (CGATS TR006)" already exists.  
\* "IFRA 26L" already exists.  
\* "IFRA 30L" already exists.  
\* "Linear" already exists.  
\* "SNAP (CGATS TR002)" already exists.  
\* "SWOP (CGATS TR001)" already exists.  
\* "SWOP (CGATS TR003)" already exists.  
\* "SWOP (CGATS TR005)" already exists.  
\* "Linear" already exists.  
Press color profiles migration completed

Migrating Emulation color profiles ...  
\* "3M Matchprint" already exists.  
\* "3M Matchprint (Standard)" already exists.  
\* "Commercial A" already exists.  
\* "DuPont Cromalin" already exists.  
\* "DuPont Waterproof Commercial" already exists.

```
* "DuPont Waterproof Publication" already exists.
* "Fogra 39L" already exists.
* "Fogra 43L" already exists.
* "Fuji ColorArt Comm CR-T3 Gloss" already exists.
* "Fuji ColorArt Pub CR-T3 MMatte" already exists.
* "GRACol (CGATS TR006)" already exists.
* "IFRA 26L" already exists.
* "IFRA 30L" already exists.
* "SNAP (CGATS TR002)" already exists.
* "SWOP (CGATS TR001)" already exists.
* "SWOP (CGATS TR003)" already exists.
* "SWOP (CGATS TR005)" already exists.
Emulation color profiles migration completed

Migrating ICC profiles ...
* "ECI_USWebCoatedSWOP.icc" already exists.
* "sRGB.icc" already exists.
* "sRGB_IEC61966-2-1_withBPC.icc" already exists.

ICC profiles migration completed.

Migrating ICC color rendering dictionaries ...
ICC color rendering dictionaries migration completed.

Migrating input channels ...
- Input channel "SpoolFolder" migrated as "SpoolFolder_M00".
Input channels migration completed.

Migration completed at: Fri May 10 12:17:34 BST 2013
```

## Notes about the log file

1. The log starts at the point that you click **Migrate**, so it does not show the exact messages that may appear as you select RIPs and the utility identifies the RIP version. This text is typical of the message shown when migrating from v9.0r2 to v10.0r0:

```
Migrating from Harlequin RIP version "9.0 Revision 2 HARLQON Licence Server MT RIP" to
version "40.0 Revision 0 Final 64-bit Edition"
```

**Note:** HMR v10.r0 uses a core RIP of v40.0, hence version "40.0 Revision 0 Final 64-bit Edition".

2. When migrating from a 32 to 64-bit RIP plugins are not migrated.
3. If the utility is unable to determine the exact revision of a RIP installation, the utility will report the difficulty and then continue without error.
4. If you perform more than one migration to the same destination RIP, the log for the second and subsequent migration session is added to the end of the log for the earlier migration.
5. The messages consistently use the term *migrating* for stages that build the temporary `newSW` folder, and *merging* for the stage where the utility modifies the RIP to which you are migrating.



## Copyright and Trademarks

Version: Harlequin MultiRIP Migrate v7.0r1

March 2014

Part number: HMR-Migrate-OEM-Win

Document issue: 119

Copyright © 2014 Global Graphics Software Ltd. All rights reserved.

Certificate of Computer Registration of Computer Software. Registration No. 2006SR05517

No part of this publication may be reproduced, stored in a retrieval system, or transmitted, in any form or by any means, electronic, mechanical, photocopying, recording, or otherwise, without the prior written permission of Global Graphics Software Ltd.

The information in this publication is provided for information only and is subject to change without notice. Global Graphics Software Ltd and its affiliates assume no responsibility or liability for any loss or damage that may arise from the use of any information in this publication. The software described in this book is furnished under license and may only be used or copied in accordance with the terms of that license.

Harlequin is a registered trademark of Global Graphics Software Ltd.

The Global Graphics Software logo, the Harlequin at Heart Logo, Cortex, Harlequin RIP, Harlequin ColorPro, EasyTrap, FireWorks, FlatOut, Harlequin Color Management System (HCMS), Harlequin Color Production Solutions (HCPS), Harlequin Color Proofing (HCP), Harlequin Error Diffusion Screening Plugin 1-bit (HEDS1), Harlequin Error Diffusion Screening Plugin 2-bit (HEDS2), Harlequin Full Color System (HFCS), Harlequin ICC Profile Processor (HIPP), Harlequin Standard Color System (HSCS), Harlequin Chain Screening (HCS), Harlequin Display List Technology (HDLT), Harlequin Dispersed Screening (HDS), Harlequin Micro Screening (HMS), Harlequin Precision Screening (HPS), HQcrypt, Harlequin Screening Library (HSL), ProofReady, Scalable Open Architecture (SOAR), SetGold, SetGoldPro, TrapMaster, TrapWorks, TrapPro, TrapProLite, Harlequin RIP Eclipse Release, Harlequin RIP Genesis Release, Harlequin MultiRIP, Harlequin Host Renderer, Harlequin Parallel Pages and Harlequin VariData are all trademarks of Global Graphics Software Ltd.

Protected by U.S. Patents 5,579,457; 5,808,622; 5,784,049; 5,862,253; 6,343,145; 6,330,072; 6,483,524; 6,380,951; 6,755,498; 6,624,908; 6,809,839.

Other U.S. Patents Pending

Protected by European Patents 0 803 160; 0 772 934; 0 896 771; 672 29 760.8-08.

Portions licensed under U.S. Patent No. 5,212,546; 4,941,038.

TrueType is a registered trademark of Apple Computer, Inc.

Fonts copyright (c) 2000-2004 Timo Lehtinen. All Rights Reserved. <http://www.timolehtinen.com/type/>.

The ECI and FOGRA ICC color profiles supplied with this Harlequin RIP are distributed with the kind permission of the ECI (European Color Initiative) and FOGRA respectively, and of Heidelberg Druckmaschinen AG (HEIDELBERG).

The IFRA ICC profiles supplied with this Global Graphics Software are distributed with the kind permission of IFRA and of GretagMacbeth.

International Cooperation for Integration of Processes in Prepress, Press and Postpress, CIP4, Job Definition Format, JDF and the CIP4 logo are trademarks of CIP4.

Adobe, Adobe Photoshop, Adobe Type Manager, Acrobat, Display PostScript, Adobe Illustrator, PostScript, Distiller and PostScript 3 are either registered trademarks or trademarks of Adobe Systems Incorporated in the United States and/or other countries which may be registered in certain jurisdictions.

The Independent JPEG Group's JPEG software

This software is copyright (C) 1991-2014, Thomas G. Lane, Guido Vollbeding.

All Rights Reserved except as specified below.

Permission is hereby granted to use, copy, modify, and distribute this software (or portions thereof) for any purpose, without fee, subject to these conditions:

- (1) If any part of the source code for this software is distributed, then this README file must be included, with this copyright and no-warranty notice, unaltered; and any additions, deletions, or changes to the original files must be clearly indicated in accompanying documentation.
- (2) If only executable code is distributed, then the accompanying documentation must state that "this software is based in part on the work of the Independent JPEG Group".
- (3) Permission for use of this software is granted only if the user accepts full responsibility for any undesirable consequences; the authors accept NO LIABILITY for damages of any kind.

The authors make NO WARRANTY or representation, either express or implied, with respect to this software, its quality, accuracy, merchantability, or fitness for a particular purpose. This software is provided "AS IS", and you, its user, assume the entire risk as to its quality and accuracy.

Global Graphics Software Ltd is a licensee of Pantone, Inc. PANTONE® Colors generated by ScriptWorks are four-color process simulations and may not match PANTONE-identified solid color standards. Consult current PANTONE Color Publications for accurate color. PANTONE®, Hexachrome®, and PANTONE CALIBRATED™ are trademarks of Pantone, Inc. © Pantone, Inc., 1991.

Other brand or product names are the registered trademarks or trademarks of their respective holders.



#### US Government Use

Harlequin RIP software is a computer software program developed at private expense and is subject to the following Restricted Rights Legend: "Use, duplication, or disclosure by the United States Government is subject to restrictions as set forth in (i) FAR 52.227-14 Alt III or (ii) FAR 52.227-19, as applicable. Use by agencies of the Department of Defense (DOD) is subject to Global Graphics Software's customary commercial license as contained in the accompanying license agreement, in accordance with DFAR 227.7202-1(a). For purposes of the FAR, the Software shall be deemed to be 'unpublished' and licensed with disclosure prohibitions, rights reserved under the copyright laws of the United States." Global Graphics Software Incorporated, Somerset Court, Suite 320, 281 Winter Street, Waltham, MA 02451.