



HARLEQUIN[®] SERVER RIP

Installing the Harlequin RIP for Mac OS X

Version 9.0

November 2011

Copyright and Trademarks

Installing the Harlequin RIP for Mac OS X

November 2011

HQ-9.0-OEM-OS X

Document issue: 151

Copyright © 2011 Global Graphics Software Ltd. All rights reserved.

Certificate of Computer Registration of Computer Software. Registration No. 2006SR05517

All Rights Reserved. No part of this publication may be reproduced, stored in a retrieval system, or transmitted, in any form or by any means, electronic, mechanical, photocopying, recording, or otherwise, without the prior written permission of Global Graphics Software Ltd.

The information in this publication is provided for information only and is subject to change without notice. Global Graphics Software Ltd. and its affiliates assume no responsibility or liability for any loss or damage that may arise from the use of any information in this publication. The software described in this book is furnished under license and may only be used or copied in accordance with the terms of that license.

Harlequin is a registered trademark of Global Graphics Software Ltd.

The Global Graphics Software logo, the Harlequin at Heart Logo, Harlequin RIP, Harlequin ColorPro, EasyTrap, FireWorks, FlatOut, Harlequin Color Management System (HCMS), Harlequin Color Production Solutions (HCPS), Harlequin Color Proofing (HCP), Harlequin Error Diffusion Screening Plugin 1-bit (HEDS1), Harlequin Error Diffusion Screening Plugin 2-bit (HEDS2), Harlequin Full Color System (HFCS), Harlequin ICC Profile Processor (HIPPP), Harlequin Standard Color System (HSCS), Harlequin Chain Screening (HCS), Harlequin Display List Technology (HDLT), Harlequin Dispersed Screening (HDS), Harlequin Micro Screening (HMS), Harlequin Precision Screening (HPS), HQcrypt, Harlequin Screening Library (HSL), ProofReady, Scalable Open Architecture (SOAR), SetGold, SetGoldPro, TrapMaster, TrapWorks, TrapPro, TrapProLite, Harlequin RIP Eclipse Release and Harlequin RIP Genesis Release are all trademarks of Global Graphics Software Ltd.

Protected by U.S. Patents 5,579,457; 5,808,622; 5,784,049; 5,862,253; 6,343,145; 6,330,072; 6,483,524; 6,380,951; 6,755,498; 6,624,908; 6,809,839.

Other U.S. Patents Pending

Protected by European Patents 0 803 160; 0 772 934; 0 896 771; 672 29 760.8-08.

Portions licensed under U.S. Patent No. 5,212,546; 4,941,038.

TrueType is a registered trademark of Apple Computer, Inc.

The ECI and FOGRA ICC color profiles supplied with this Harlequin RIP are distributed with the kind permission of the ECI (European Color Initiative) and FOGRA respectively, and of Heidelberg Druckmaschinen AG (HEIDELBERG).

The IFRA ICC profiles supplied with this Global Graphics Software are distributed with the kind permission of IFRA and of GretagMacbeth.

International Cooperation for Integration of Processes in Prepress, Press and Postpress, CIP4, Job Definition Format, JDF and the CIP4 logo are trademarks of CIP4.

Adobe, Adobe Photoshop, Adobe Type Manager, Acrobat, Display PostScript, Adobe Illustrator, PostScript, Distiller and PostScript 3 are either registered trademarks or trademarks of Adobe Systems Incorporated in the United States and/or other countries which may be registered in certain jurisdictions.

Global Graphics Software Ltd. is a licensee of Pantone, Inc. PANTONE® Colors generated by ScriptWorks are four-color process simulations and may not match PANTONE-identified solid color standards. Consult current PANTONE Color Publications for accurate color. PANTONE®, Hexachrome®, and PANTONE CALIBRATED™ are trademarks of Pantone, Inc. © Pantone, Inc., 1991.

Other brand or product names are the registered trademarks or trademarks of their respective holders.



■ US Government Use

Harlequin RIP software is a computer software program developed at private expense and is subject to the following Restricted Rights Legend: "Use, duplication, or disclosure by the United States Government is subject to restrictions as set forth in (i) FAR 52.227-14 Alt III or (ii) FAR 52.227-19, as applicable. Use by agencies of the Department of Defense (DOD) is subject to Global Graphics Software's customary commercial license as contained in the accompanying license agreement, in accordance with DFAR 227.7202-1(a). For purposes of the FAR, the Software shall be deemed to be 'unpublished' and licensed with disclosure prohibitions, rights reserved under the copyright laws of the United States." Global Graphics

■ Software Incorporated, 31 Nagog Park, Suite 315, Acton MA 01720.

Contents

1	Introduction.....	1
2	Supplied components.....	3
3	System requirements	4
4	Installation	5
5	License Server	8
6	The License Manager.....	10
7	Uninstall procedure	11
8	Using the Harlequin RIP	11
9	Testing the Harlequin RIP	12
10	Try Before You Buy licenses.....	12

Installing the Harlequin RIP for Mac OS X

I Introduction

This document describes the procedure for installing the Harlequin PLUS Server RIP v9.0 Release on Mac OS X. To ensure trouble free installation of the Harlequin RIP, follow these instructions carefully. After installing, you may want to test the RIP is working correctly by previewing a few fonts on screen. [“Testing the Harlequin RIP” on page 12](#) describes how to do this.

Please note the following items that affect the Harlequin RIP v9.0 Release:

- The standard plugins are installed at the same time as the Harlequin PLUS Server RIP. Optional plugins are supplied with their own installer. See the documentation supplied with the plugin for more details.
- The Harlequin PLUS Server RIP will run on a Windows 64-bit operating system as long as it is 32-bit compatible. This means that when you install the operating system you must check the option that allows 32-bit compatibility.
- The Harlequin License Server (HLS) is installed at the same time as the Harlequin RIP. The Harlequin RIP v8.3 Release must use v4.1 of the Harlequin License Server. For more information, see [“Harlequin License Server” on page 1](#).
- The Harlequin License Manager application is provided to help manage your licenses, and to allow the addition of extra permits. See [“The License Manager” on page 10](#).
- A Try Before You Buy option is available for RIP upgrades. For more information, see [“Try Before You Buy licenses” on page 12](#).

1.1 Dongles

The supported dongles for the Harlequin PLUS Server RIP v9.0 Release are SuperPro[™]. Unsupported dongles are Eve2 and Eve3, and should be replaced with a supported dongle type.

Note: Installing the software on a PowerPC Mac and leaving v1.0.0.1 of `Sentinel.kext` installed will result in a non-working system. You must either delete `:System:Library:Extensions:Sentinel.kext` or upgrade to v1.0.0.3 or later.

1.2 Harlequin License Server

The Harlequin License Server is installed at the same time as the Harlequin RIP. The Harlequin PLUS Server RIP v9.0 release must use v4.1 of the HLS. Installation of the HLS is not an option and is performed automatically. It is important that the dongle is plugged in before any attempt is made to start the HLS. The HLS service automatically starts up when the computer boots up, and when the Harlequin RIP is started. You can, if you wish, manually start and stop the service. If the HLS service is stopped, the RIP will not work.

If you have a supported dongle type, the License Server will read the dongle ID, ascertain that it is valid, and give the RIP permission to run, by creating a valid “permit” which the RIP checks when it starts up.

If you attempt to install an older version of the Harlequin RIP after installing and using a v9.0 RIP, the v9.0 RIP will no longer work. This is because installing the older version of the RIP also replaces the License Server. The v9.0 RIP requires the v4.1 License Server to work.

For more information, see “[License Server](#)” on page 8.

Note to OEM: The following sections (1.3, 1.3.1 and 1.3.2) describe the Licensing and installment plan which you may want to remove or amend according to your licensing model.

1.3 License model

The license model is extended to allow RIP customers to spread the cost of a RIP purchase over a period (such as one year), and to be able to use it immediately while providing OEMs with the ability to enforce regular payment. Once the full RIP price has been paid (after a year), the OEM can easily enable the RIP to run from then on.

This licensing model is achieved by the use of a *Licensing and installment plan* which provides a combination of a recurring license period and a date at which the RIP customer gains an indefinite licence. The length and number of recurring periods and the period before an indefinite licence is provided (if ever), can be varied by the OEM.

Provision of the Licensing and installment plan option is subject to appropriate commercial agreements.

The RIP customer is automatically warned when the current license period gets close to expiry.

In addition, the RIP customer can enable layered options and install encrypted fonts in the RIP running under an installment plan or leased licence.

If the lease or installment plan agreement for the RIP is terminated, all layered options are terminated at the same time. The OEM does not need to enable leasing of layered options separately from the RIP.

It is possible to upgrade the RIP used under a lease licence without swapping out the dongle. It is not necessary to swap out a dongle or any other hardware component for every license period.

OEMs will be charged the full cost of the RIP when the dongle/licence is initially delivered to them.

The solution provided allows OEMs (and dealers) to carry an inventory of any element that needs physical shipping (such as dongles).

1.3.1 Try Before You Buy upgrades

A RIP customer with a RIP running under a *Licensing and installment plan* can evaluate layered options under a TBYYB license. It is not necessary to swap a dongle for every license period.

In addition, The RIP customer can return to their older RIP without requiring replacement of hardware or re-configuration of the older RIP.

The RIP customer can build on the configuration applied in the upgrade version installed for the TBYYB as and when a permanent upgrade is purchased. The TBYYB option is only provided for upgrades on sites which are already running the RIP using a USB dongle. RIP customers with older dongles (for example, parallel) should obtain a new dongle from their OEM.

Provision of the TBYYB solution is subject to appropriate commercial agreements.

1.3.2 Demo dongles

From version v9.0 demonstration and evaluation dongles for the Harlequin Server RIP require permits to operate. 3, 6 month or 1 year time-limited permits are available, and apply to all demonstra-

tion dongles already shipped. That is, demonstration dongles will not work with v9.0 without a new permit.

Permits are available to OEMs who provide a list of demonstration dongles that are in active and legal use.

The RIP customer is warned as the time remaining on the permit approaches expiry.

1.4 Changing the clock

Before installing the Harlequin RIP together with the HLS, you must ensure the computer clock is correctly set. Any change made to the computer clock after installation, specifically turning the clock backwards so that the date is changed, may prevent the HLS from using permits. Launching and running a dongled RIP will not be affected but any function enabled through a permit may fail. This includes, but is not limited to: “Try Before You Buy” (TBYB), JDF and PPM.

Note: Changes made to the clock to correct for small amounts of “drifting” and for daylight saving will not affect the HLS.

1.5 Passwords

You can upgrade to v9.0 from v8.3, v8.1, v8.0 or a 7.x or 6.x version.

Note: You cannot upgrade to v9.0 from v8.2.

You can continue to use the same dongle together with an upgrade password. However, upgrades from very old RIP versions, where the dongle is something other than USB, requires that the dongle swapped for a newer one.

To get new passwords please contact either:

sales-admin-uk@globalgraphics.com
sales-admin-us@globalgraphics.com

You will need to provide the following information:

- Password, layered option, and name (from the Extra’s dialog box).
- Serial number from RIP monitor on launch (Example: Serial number: 8373-46).
- Part number from dongle label (Example: PS1-N-21-0BD-A7).

Alternatively, if you are registered to use the eKey system you can obtain your password using the online facility.

2 Supplied components

The Harlequin RIP package contains the following components:

- Harlequin RIP CD-ROM set—with CDs containing the Harlequin RIP, Harlequin License Server, and Harlequin License Manager, optional plugins and tools and documentation.
- Dongle—must be plugged into the computer before attempting to start the RIP and whenever the Harlequin RIP is running.

Note to OEM: Amend/add to this list according to the components you supply.

3 System requirements

For optimum RIP performance, it is important for the computer running the Harlequin RIP to have a good system specification, with plenty of free disk space, a powerful processor and ample system memory. Refer to [Table 1](#) for the recommended system specifications for running the Harlequin RIP. Also, you should not run other processor/memory intensive applications when the RIP is processing jobs, as they could slow down the performance of the RIP.

The *Harlequin RIP OEM Manual for Mac OS X* describes the features of the RIP that can affect throughput and shows how you can improve performance. See Chapter 2, “Running the Harlequin RIP” in the Harlequin RIP manual for details.

Note to OEMs: The mention of Chapter 2, “Running the Harlequin RIP”, may need manual editing in your versions of the installation guide

Component	Minimum requirement
Processor	PowerMac G3, G4, G5, iMac, Intel Mac or PowerPC
Operating System	Macintosh OS X 10.4.x “Tiger” Macintosh OS X 10.5.x “Leopard” Macintosh OS X 10.6.x “Snow Leopard” Supports both Workstation and Server variants Note: For the latest information on operating system support please see the release notes
Hard drive	4 GB free space (minimum)
System requirements	256 MB for the RIP <ul style="list-style-type: none"> • Add an additional 8 MB RAM for each composite PostScript font used in a single job • Add an additional 12 MB for Harlequin Precision Screening™ (HPS™) • Add an additional 256 MB for TrapPro • Add an additional 32 MB for EDS Screening • Add an minimum of 32 MB or 64 MB (preferred) if you intend to run the HEDs screening plugin Note to OEM: You may want to amend these details to account for your particular plugin requirements
Port	USB port for the Sentinel security dongle
CD-ROM	CD-ROM drive for installing the Harlequin RIP
Minimum monitor specification	1024 pixels x 768 pixels (recommended)

Table 1 Harlequin RIP system recommendations

3.1 Special notes

This section contains useful information you should note before installing the RIP.

The Harlequin Server RIP v9.0 is a 32-bit application only, but is supported on 64-bit versions of Windows 7, Windows Server 2008 and Windows Server 2008 R2 as well as on the 32-bit versions of those operating systems. The extension of supported operating systems for the Harlequin Server RIP v9.0 also applies to some linked components: such as output plugins, SOAR, SetGold and GenLin. It is not necessary to extend the OS support for the JDF Enabler or for the Print Production Manager.

3.1.1 Memory considerations

On MacOS X, the maximum possible program memory size is 3 GB.

4 Installation

This section describes how to install the Harlequin RIP and its associated products on Mac OS X. Close all other applications before installing the Harlequin RIP.

The summary of the installation procedure is:

1. Make sure the dongles are unplugged before commencing the driver installation.
2. Previous installations of the Harlequin RIP and any application using the HLS must be shutdown before attempting to install a new RIP.
3. Make sure the computer clock is set correctly. See [“Changing the clock” on page 3](#) for the reason.
4. The HLS must be stopped before attempting to install a new RIP. See [“Starting and stopping HLS” on page 9](#) for more information. On Macintosh platforms the HLS is automatically shut down by the installer.
5. Run the InstallAnywhere package, and install the RIP and dongle drivers, plus any other plugins you need. See [“Installation procedure” on page 5](#).
6. Start the HLS service. On Macintosh platforms the HLS is automatically started by the RIP.
7. Start the RIP. See [“Starting the Harlequin RIP” on page 11](#).

4.1 Installation procedure

When installing it is recommended that you:

- Install the RIP as an Administrator.
- Run the RIP as a User.
- To do this, the relevant read, write and execute permissions need to be set for a designated *group*, whose members are able to run the RIP.

This is a manual operation which involves setting up *groups* and adding users as members to those groups, then changing the permissions of the RIP directories accordingly.

For example:

1. Create a new user group called, for example, *RIPusers*.
If necessary, refer to the Help for details on how to create a new user group.
2. Add the Administrator and any RIP users as members of that group.
3. Install the RIP as Administrator (see below for details).

- As Administrator still, use the Get Info dialog to change the top-level directory of the Harlequin RIP (and all enclosed files and directories) to have read, write and execute permissions for the group called *RIPusers*.

Any user belonging to the *RIPUsers* group will be able to run the RIP.

Note: If you wish, you can create a new group from the Get Info dialog by choosing *Other...*

Once you have set up a user group as described above, you can install the Harlequin RIP.

Insert the Harlequin RIP CD-ROM for OS X and open it. Double-click **Install_xx.zip** (where **xx** is the abbreviated customer name) to load the InstallAnywhere product installer, which allows you to easily install the Harlequin RIP products contained on the CD. The installer requires Mac OS X 10.4 or later

- Be sure you have Java 6 or later installed. You can download Java from Apple's site.
- The compressed installer should be recognized by Stuffit Expander and should automatically be expanded after downloading. If it is not expanded, you can expand it manually using Stuffit Expander 6.0 or later.

If you have any problems launching the installer once it has been expanded, make sure that the compressed installer was expanded using Stuffit Expander. If you continue to have problems, please contact technical support.

- Follow the InstallAnywhere screen instructions. Select the **Next** button to move onto the next screen and the **Previous** button to return to a previous screen. Note that each screen of the install procedure is labelled both above and at the left side of the window.

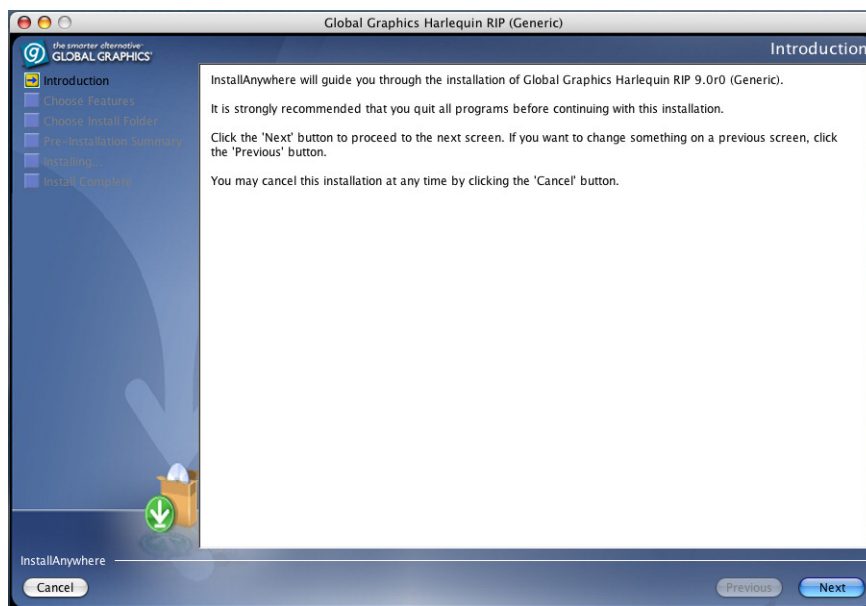


Figure 1 InstallAnywhere dialog

- The “Choose Features” screen shows the products available in the package. When you select a product, a short description of its function appears. Those products not checked in the list will not be installed.

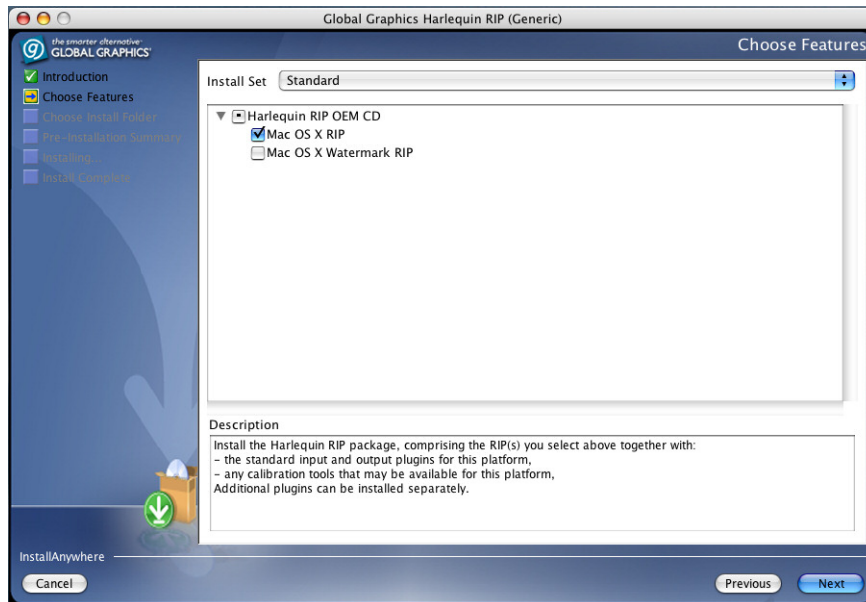


Figure 2 InstallAnywhere Choose Features dialog

Note: From v8.1 plugins are installed using their own installer.

- Use the “Choose Install Folder” screen to select an installation folder.

If you wish you can choose a different install folder to the default. Click **Choose...** and navigate to the required folder. If at any time you wish to restore the default location click **Restore Default Folder**. Click **Next** to install in the desired location and move onto the next stage.

Note: A **HarlequinRIP** folder is *not* automatically created in the chosen target location when **Choose...** is selected. The RIP and components are installed directly into the target location. This is different from previous RIP installers, where a **HarlequinRIP** folder was created in the target location.

Note: The RIP cannot be installed into “Program Files” on Windows Vista, Windows 7 or Windows 2008. The default location in these cases is: **C:\Users\<user name>\HarlequinRIP_8_3_xxx**.

- The “Pre-installation Summary” screen allows you to examine your installation choices. If required, use the **Previous** button to return to earlier screens and modify your selections, otherwise click **Install** to proceed with the installation.
- A warning dialog may be displayed at this point. Any products on your system that use the Harlequin License Server should be stopped before continuing with the installation. Click **Continue** to move ahead with the installation. Previous versions of the HLS will now be removed. You will be asked to enter your administrator password at this point in the installation.
- The installation will now continue. This may take some minutes. The time taken depends on the number of options to be installed. A progress indicator is displayed at the bottom of the dialog box.
- The “Install Complete” screen indicates that the installer has finished. If any errors have occurred a message will be displayed. Click **Done** to exit from the installer. You can view the details of the errors by opening the **xx_InstallLog.xml** file which is located in the installation folder. The install log file is created even if the installation is error free.

Note: This log file is only created after **Done** is clicked - but the message to examine that file is displayed in the “Install Complete” dialog - so it is possible to navigate to the directory and not find the logfile (if **Done** has not been clicked first).

You can search for installation errors in this document by searching for the word “warning”.

4.2 Loading the dongle drivers

This section describes how to load the required dongle drivers for the Harlequin RIP.

The latest dongle drivers for Mac OS X are installed at the same time as the RIP. Therefore, a separate installation procedure is not required.

5 License Server

This section describes how to add new permit files and how to start and stop the HLS (Harlequin License Server) service. For more information on adding permit files, see [“Adding a permit file to HLS” on page 10](#). The easiest way to start the service is to restart the machine. However, if this is not convenient, alternative methods exist and these are described in [“Using the Harlequin RIP” on page 11](#).

5.1 Permit files and licenses

Global Graphics’ products are certified to run by licenses. Licenses are provided via permit files or by dongles. Without a license the product is not permitted to start, resulting in the following typical error messages:

```
License Server failure (OxC8001005): permit for this software not available

License Server failure (OxC8001006): no free licenses available.
```

5.2 About permit files and licenses

Permit files may contain multiple licenses. Each license allows one instance of the product to start. For example, if a permit contains two licenses for JDF Enabler, two instances of JDF Enabler are allowed to run concurrently.

For the Harlequin RIP, if you have a supported dongle type, the License Server will read the dongle ID, ascertain that it is valid, and give the RIP permission to run, by creating a valid “permit” which the RIP checks when it starts up. That is, the dongle provides a permit containing a single license for one RIP. All other RIP instances require a permit file containing the required number of licenses.

Note: With HLS 4.1 existing demo dongles are treated as being empty dongles and all users of v9.0 demo RIPs will need permits.

Note: Permit files and licenses do not enable additional Harlequin RIP options like TrapPro, ColorPro and printer plugins. These features are enabled in the RIP by entering a valid password in the Configure RIP Extras dialog box.

5.2.1 How authorization works

Product authorization is obtained from the dongle attached to the computer.

Every permit file issued by Global Graphics is “keyed” to a specific HLS host server or servers. These servers are identified in the permit files, using the IP address, dongle number and/or machine ID of the HLS host. A permit file may not therefore be used on any machine whose dongle, ID or IP address is not known.

Permits generally have a very long expiry date. However, 30-day permits exist which are used to limit the life span of Try Before You Buy features in the Harlequin RIP.

A single permit file is often used to enable multiple products, such as the JDF Enabler and Try Before You Buy.

Note to OEM: For more information on these options, see the document: *Ordering RIP Products Including Try Before You Buy Options - Technical Note Hqn 059*.

Note: If you change the dongle on a machine, it changes the HLS unique ID. Thus, if you have any permit files keyed to the unique ID of the previous dongle, those permit files will not be valid with the new dongle. So, if you have for example a JDF Enabler permit file keyed to dongle1, that would not be valid for use with dongle2. Swapping to dongle2 would prevent your JDF Enabler from working.

5.2.2 Re-using licenses

Licenses are released and are available for re-issue when a product is closed or after an abnormal program termination occurs. If the product and HLS are running on the same machine, the license is immediately available for re-issue when a product is closed. However, in cases where HLS and the product are installed on different machines, the license may not be available for up to two minutes after a product is closed.

5.2.3 More information

For information on the HLS, you can examine the `hls.log` file. See [Table 2](#) for more details.

5.2.4 Location of the Harlequin License Server components

After installation, the HLS components can be found in the following locations:

HLS program	Library:Application Support:Global Graphics Software:Harlequin Licence Server
License Manager	Library:Application Support:Global Graphics Software
Permit files	Library:Application Support:Global Graphics Software:HLS Permits Note: The HQN directory must be created (as superuser). You must apply correct permissions to the HQN directory so that users are able to place permit files into it.
Log file	Library:Application Support:Global Graphics Software:hls.log

Table 2 HLS Components

5.3 Starting and stopping HLS

HLS is installed in the Mac OS X SystemStart folder and starts each time the computer is started and when the RIP is started. You can start and stop HLS manually by issuing the following commands in a Terminal window.

To start HLS:

```
sudo /sbin/SystemStarter start HarlequinLicenseServer
```

To stop HLS:

```
sudo /sbin/SystemStarter stop HarlequinLicenseServer
```

To check if HLS is running:

```
top | grep hqn_lsd
```

Note: `/sbin/SystemStarter` can only be run as `root`, hence the need for `sudo`. You can prepend this to any command to run it as `root`. You will be prompted for an administrator password. See `man SystemStarter` for more information.

6 The License Manager

The License Manager allows you to view license information, and to see which of your HLS host machines are running, both locally and on the network. You can also use the License Manager to add new permit files and to open the HLS log file.

For the License Manager to work the Harlequin License Server must be running. See [“Using the Harlequin RIP” on page 11](#) for more information.

6.1 Starting the License Manager

To start the License Manager:

Navigate to:

```
Library/Application Support/Global Graphics Software
```

and run **License Manager**.

After a slight delay, during which time the application searches for the HLS hosts, the application window opens.

6.2 Obtaining your machine identity

The Harlequin License Manager displays the ID and IP address of a machine (in the Host Info window) as well as the dongle security number, OEM customer number and the products enabled by the dongle (in the Dongle Info window).

Note: If you are running a Harlequin RIP, you can also find the ID of the dongle by looking at the Harlequin RIP > Configure RIP > Extras dialog box. The number you require is displayed in the Trial code field.

6.3 Adding a permit file to HLS

You can use the License Manager utility to add new permit files to the HLS host that is running on the same machine. The License Manager does not allow you to add permits to HLS hosts running on remotely connected servers.

To add a new permit file, select the local server in the Server list and click the **Add Permit** button, and then select the permit file you wish to add. After adding a new permit file, HLS automatically re-initializes itself and updates the license information for the new permit file you have just added.

The License Manager displays the currently available permit files. See [“Location of the Harlequin License Server components” on page 9](#) for the location of the permit files.

7 Uninstall procedure

This section describes how to uninstall the Harlequin RIP.

7.1 Uninstalling the RIP

1. Navigate to:

`<installation folder>:Uninstall_Global Graphics Harlequin RIP X.X (customer name)`

2. Double click on the uninstall icon. The Uninstall dialog box will be displayed. Click **Uninstall** to complete the process. Note that the Uninstall process will not remove any folders or files created after the installation.

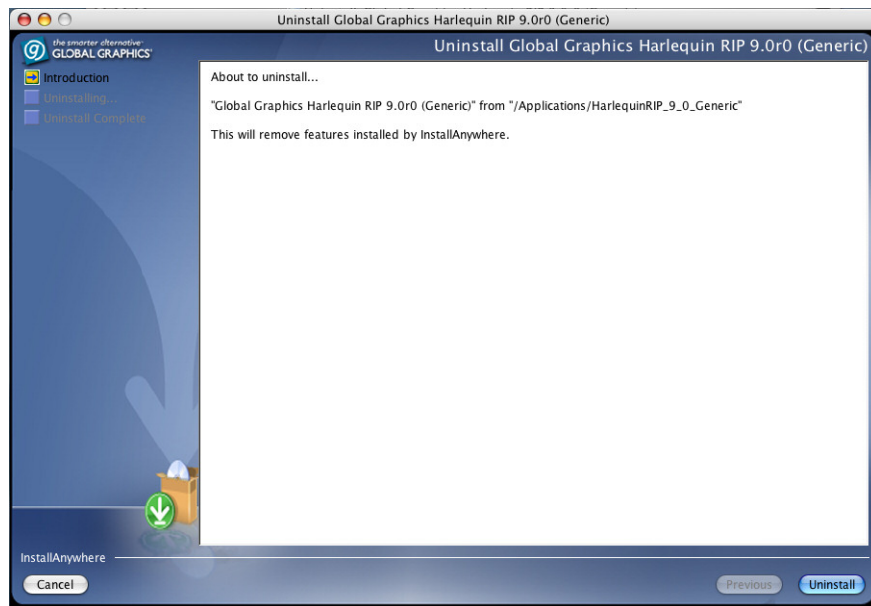


Figure 3 Uninstall dialog

3. When the “Uninstall Complete” message appears click the **Done** button.

8 Using the Harlequin RIP

After installing the Harlequin RIP, and loading the dongle drivers, you may start the RIP and start to process print jobs.

Note: Immediately after installation and before attempting to use the RIP you should ensure that the dongle is attached.

8.1 Starting the Harlequin RIP

To start the Harlequin RIP:

1. If the security dongle is not attached to the computer, you should make sure it is attached.
2. Open the Harlequin RIP installation folder and double click **LS HARLQN**. The folder also contains **Genlin** (a calibration utility for the Harlequin RIP), as well as a **docs** folder that contains last-minute product release notes.

Note: The first time you start the RIP you may be presented with a License Server dialog prompting you for your Administrator password. Entering the password completes the HLS install and the start-up continues.

3. If it is the first time the RIP has been loaded, the Select User Interface Language window opens, as shown in Figure 4. From the list choose the user interface language to use for dialog screens, messages and menus in the RIP. If your preferred language is not enabled, click **Enable** and enter the password when prompted (your supplier can provide you with a password if you do not have one).

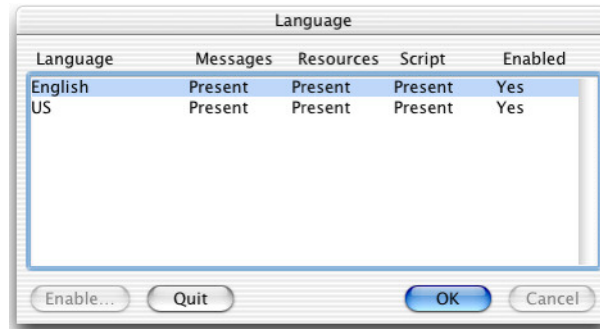


Figure 4 Select user-interface language

4. Click **OK** after choosing the language. The RIP loads and is now ready for use.

9 Testing the Harlequin RIP

To confirm the Harlequin RIP is installed and working correctly, we suggest that you proof some fonts on screen. The following procedure describes how to do this:

1. In the Harlequin RIP choose **Fonts > Proof Fonts**. The Proof Highlighted Fonts window opens.
2. From the list, select four or five fonts (using the Command key) and then click **Proof**. The fonts are rasterized and the results are displayed on screen, as shown in Figure 5.

Palatino-Italic

abcdefghijklmnopqrstuvwxyz
ABCDEFGHIJKLMNOPQR
 1234567890-!@#%&^&*()_

Figure 5 Proof fonts

If this test completes satisfactorily the Harlequin RIP is working correctly.

10 Try Before You Buy licenses

If you would like to make use of a Try Before You Buy feature, you should contact your supplier and request a license. You will be asked to provide the following information:

- Serial number of your dongle. This is a five digit number.

- Security number of your dongle. This is a four or five digit number with a two digit checksum written on your dongle. It is also displayed in your Harlequin RIP monitor during start-up.
- Trial code. This code is displayed in the Harlequin RIP > Configure RIP > Extras dialog box in the Trial code field.

See [“Obtaining your machine identity” on page 10](#) for more information on how to obtain these numbers.

After you have provided this information, a `.tbyb` file will be sent to you.

10.1 Installing Try Before You Buy licenses

Use the following procedure if you have a v8.0 dongle and want to use a Try Before You Buy license for a RIP upgrade to v9.0:

1. Click Try... in the Revision Password dialog.
2. Select the Try Before You Buy installation file. Once selected the Try Before You Buy permit is installed, HLS is restarted and the revision password is displayed in the Revision Password dialog.
3. Click OK to start the RIP. Any other passwords in the Try Before You Buy installation file are read as the RIP starts up and a confirmation dialog is displayed.

The following procedure describes how to install a Try Before You Buy license in the Harlequin RIP.

1. In the RIP, open the Configure RIP Extras dialog box ([Figure 6](#)) by clicking Harlequin RIP > Configure RIP > Extras.

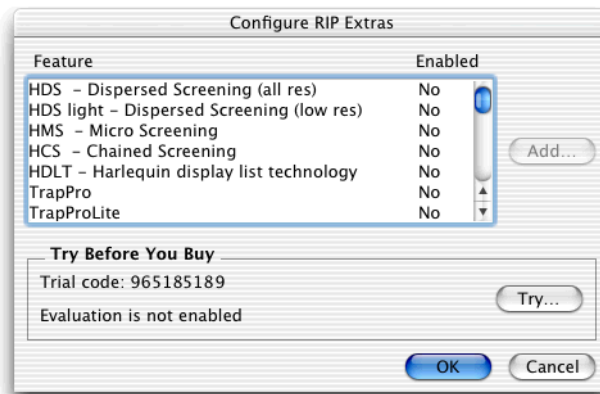


Figure 6 The Configure RIP Extras dialog box

2. Click the Try button and navigate to your Try Before You Buy license (`<file name>.tbyb`) that has been e-mailed to you. If the Try button is not available, see [“Manually installing a Try Before You Buy license” on page 14](#).
3. Select the `.tbyb` file. If the installation is successful the following message appears:

```
Try Before You Buy installed successfully
```

Click **OK** to remove the message. The enabled trial options now show `Trial` in the **Enabled** column.

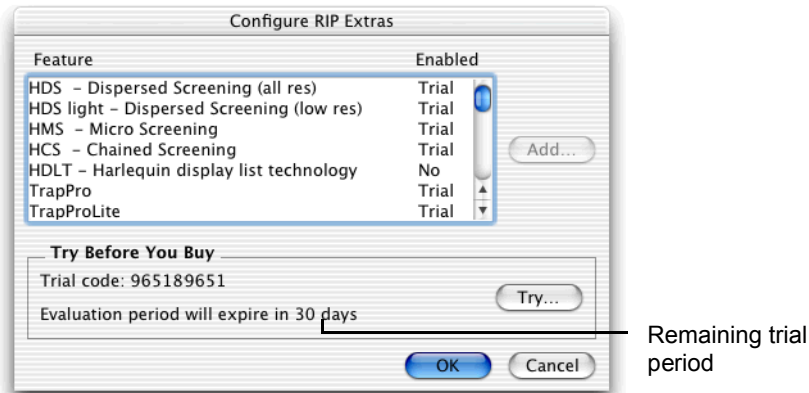


Figure 7 Configure RIP Extras dialog box showing trial features

4. Click **OK** until all open dialog boxes are closed to complete the procedure.
5. Restart your RIP.

The remaining period for the trial options is shown in the monitor window when the RIP starts and in the Configure RIP Extras dialog box.

When you install a `TBYB` file, two things occur:

- a permit is added to the License Server
- passwords are set

Therefore, if you decide to select **Cancel** in any of the dialogs displayed after the Extras dialogs, the Trial will not be enabled. Cancelling will un-set the passwords, but the License Server will still have the permit. In this case, `TBYB` is still enabled but you are, in effect, evaluating *no* features, hence the message:

```
Evaluation period will expire in <n> days
```

where `<n>` is the number of days.

10.2 Manually installing a Try Before You Buy license

The following instructions describe how to manually install a Try Before You Buy license in the RIP. You may have to do this if the `Try` button in the Configure RIP Extras dialog box is unavailable, which occurs when the RIP and the Harlequin License Server (HLS) are installed on different machines.

To install a Try Before You Buy license manually, do the following:

1. Open the Try Before You Buy license in a text editor.
2. Copy the information between `<Permit data starts>` and `<Permit data ends>` into a new text file. Save the new text file with the name called `TBYB.hqn.permit`.
3. Copy the information between `<Password data starts>` and `<Password data ends>` into a new text file. Save the new text file with the name `TBYB.pwd`.
4. On the machine where HLS is installed, open your HLS permits folder, or create the folder if it does not already exist. The folder is located in the following place:

```
Library/Application Support/Global Graphics Software/Harlequin License Server
Permits
```

5. Place the file `TBYB.hqn.permit` in the permits folder and then restart the computer.
6. On the machine where the RIP is installed, open the RIP passwords folder:

```
<Harlequin RIP install folder>/SW/Passwords
```

and add the file `TBYB.pwd`.

7. Restart the RIP.

The Try Before You Buy features are now enabled in the RIP. The remaining evaluation period for the trial features is displayed in the RIP monitor window when the RIP loads, and in the Configure RIP Extras dialog box.

10.3 Post installation Try Before You Buy RIP messages

After installing a Try Before You Buy license, the Harlequin RIP monitor displays the following helpful messages:

```
Try Before You Buy evaluation period will expire in <n> days
```

On the day the license is due to expire:

```
Try Before You Buy evaluation period expires today
```

And after the license has expired:

```
Try Before You Buy evaluation period has expired
```

10.4 Removing Try Before You Buy options

If you need to remove the Try Before You Buy options from a RIP, you can do this using the following procedure:

1. Shutdown the RIP.
2. Stop the License Server. See [“Using the Harlequin RIP” on page 11](#).
3. Move the files labeled `tbyb.installed.hqn.permit` files from the following folder to a safe location:

```
/Library/Application Support/Harlequin License Server/
```

4. Move the files of the form: `xxxxx-tbyb.installed.004` from the following folder to a safe location:

```
<installation folder>\SW\Passwords
```

5. Restart the License Server, see [“Using the Harlequin RIP” on page 11](#).
6. Restart the RIP. Check in the Harlequin RIP > Configure RIP > Extras dialog, and the Trial options will no longer be displayed.

If you need to re-enable the trial options within the time frame of the trial period, you may place the password and permit files back into the folders from which they came.

1.5 Expiring licenses

The HLS governs when a license is considered to be expiring according to the following rules:

- if in its last 7 days for durations of up to 40 days
- if in its last 14 days for durations up to 100 days
- if in its last 21 days for permits up to 200 days.
- if in its last 30 days for longer durations.

As an aid the following messages are displayed in an Expiring Licenses dialog when the RIP is first started:

RIP license will expire in 7 days, RIP license will expire in 6 days, and so on.

RIP license expires tomorrow

RIP license expires today

RIP license has expired.

Similar messages will appear for Try Before You Buy permits.